



# Q59 802.15.4-2015 Sniffer USB Dongle



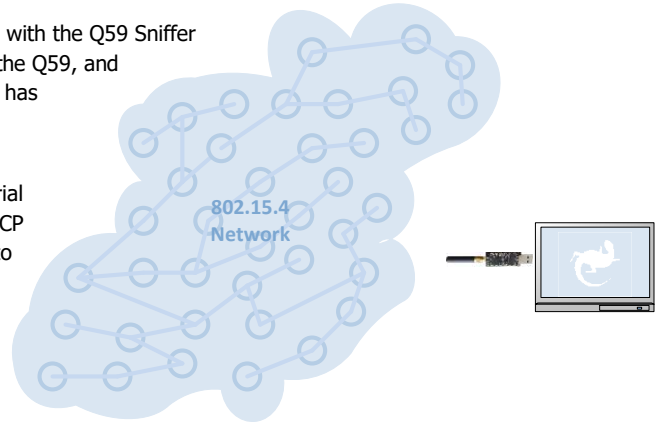
LOCAL PROBE FOR PAN NETWORK ANALYSIS

## overview

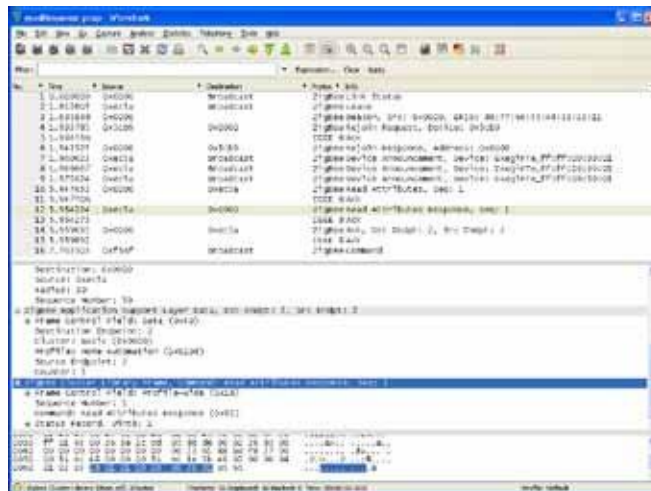
Comprehensive analysis of an 802.15.4 PAN is simplified with the Q59 Sniffer Dongle. Capture packets on an 802.15.4 network using the Q59, and then analyze them in real time with Wireshark®. Exegin has enabled Wireshark with protocol dissectors for 802.15.4, 6LoWPAN, ZigBee, and the ZigBee cluster libraries.

The Q59 has a USB interface over which a virtual serial port is exposed. Drivers interface with the Q59's MCP protocol and provide packet streams for Wireshark to read and display.

More than one Q59 can be used to cover different channels.



## WIRESHARK SCREEN SHOT



## benefits

- Portable application for on-site monitoring
- Saves time spent manually decoding upper application layers.
- Minimizes training: industry standard Wireshark user interface.
- Presents an Open API for easy customization to dissect private applications.





# Q59 802.15.4-2015 Sniffer USB Dongle



## SPECIFICATIONS

- **SYSTEM REQUIREMENTS**

Full Linux support.

Requires Exegin specific drivers and interface programs.

MCPsnif

- **DIMENSIONS**

Metric – 65mm W x 23.5mm L x 10mm D

Imperial – 2.55" W x 0.925" L x 0.4" D

- **WEIGHT**

Device – 25g / 1 oz.

- **POWERSUPPLY**

USB

- **ENVIRONMENTAL**

0°C – 50°C operating

-40°C – 85°C storage

95% maximum humidity, non-condensing

- **REGULATORY CERTIFICATION**

None

- **WARRANTY**

1 year parts and labour

## FEATURES

- **NETWORK PROBE**

2.4GHZ 802.15.4g radio

sub-GHz 802.15.4g radio

Bands: 389.5-510MHz

779-1020MHz

2400-2483.5MHz

FSK, O-QPSK, OFDM modulations supported on both bands.

External antenna (RP-SMA male)

- **PROTOCOL ANALYZER**

Industry standard Wireshark® protocol analyzer

Live capture and offline analysis

Flexible filtering and coloring rules for quick, intuitive analysis

- **PAN PROTOCOL DISSECTORS**

802.15.4

ZigBee 2007

ZigBee PRO

ZigBee SCoP (ZIPT)

ZigBee Cluster Library

ZigBee jupiterMesh

6LoWPAN

Wi-SUN FAN



401 - 2071 kingsway avenue  
port coquitlam | bc | canada | v3c 6n2  
t +1.604.468.2552  
info@exegin.com | www.exegin.com