



Q51 802.15.4 PANalyzer™

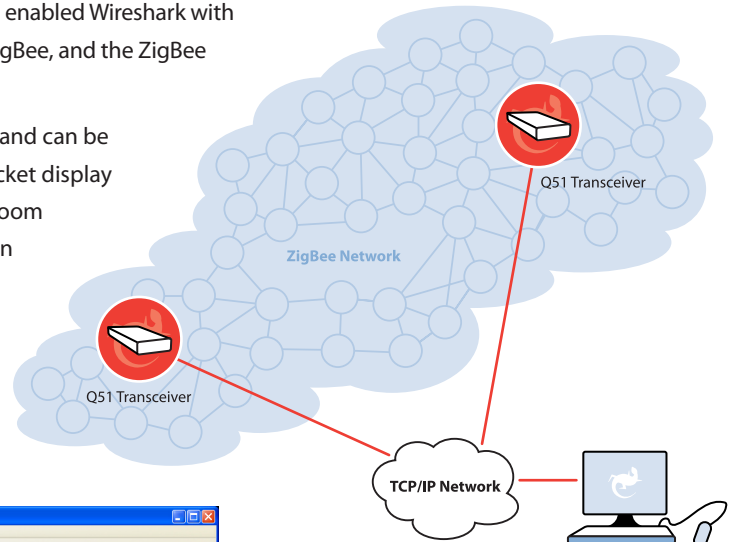
REMOTE PROBE FOR PAN NETWORK ANALYSIS



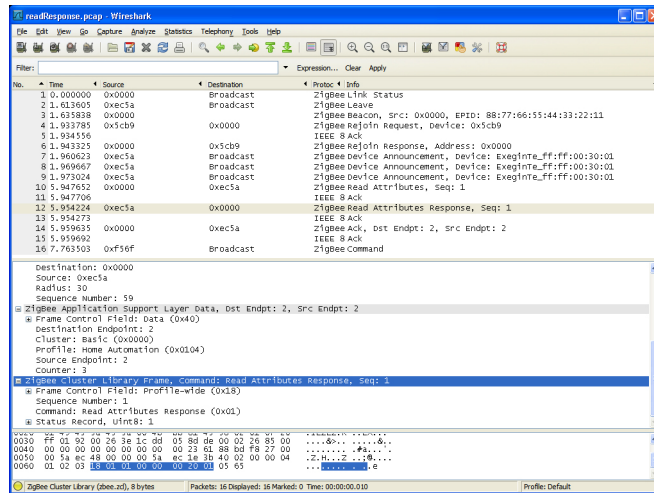
overview

Comprehensive analysis of an 802.15.4 PAN is simplified with the Q51 PANalyzer. Capture packets on an 802.15.4 network using the Q51, and then analyze them in real time with Wireshark®. Exegin has enabled Wireshark with protocol dissectors for 802.15.4, 6LoWPAN, ZigBee, and the ZigBee cluster libraries.

The Q51 has an Ethernet interface, not USB, and can be placed wherever an IP connection exists. Packet display and analysis of a PAN can be done across a room or across a continent. More than one Q51 can be used to completely cover a large PAN and capture packets that would be hidden from a single device.



WIRESHARK SCREEN SHOT



benefits

- Exposes hidden nodes on a large PAN by allowing multiple probe points.
- Increases support staff efficiency: monitor multiple PANs from a single central location.
- Conveniently installs anywhere: compact size and Power over Ethernet (PoE) support.
- Saves time spent manually decoding upper application layers.
- Minimizes training: industry standard Wireshark user interface.
- Presents an Open API for easy customization to dissect private applications.





Q51 802.15.4 PANalyzer™



SPECIFICATIONS

■ SYSTEM REQUIREMENTS

- Protocol Analysis: Windows XP, Windows Vista, Linux, OS X, and more
- Web Administration: Internet Explorer 6.0 or Mozilla Firefox 1.0 (or later)
- Gecko Installation Tool: Windows XP, Vista. Installation may also be done from any command line capable of running Telnet.

■ DIMENSIONS

- Metric – 65mm W x 23.5mm L x 111mm D
- Imperial – 2.55" W x 1.925" L x 4.4" D

■ WEIGHT

- Device – 105g / 4 oz.
- 110VAC Power Supply – 83g / 3 oz.
- 220VAC Power Supply – 94g / 3.5 oz.

■ POWER SUPPLY

- Available with external DC power supplies for most voltages and frequencies (120V / 60Hz - 240V / 50Hz)
- IEEE 802.11af Power Over Ethernet

■ ENVIRONMENTAL

- 0°C – 50°C operating
- -40°C – 85°C storage
- 95% maximum humidity, non-condensing

■ REGULATORY CERTIFICATION

- USA: FCC Part 15
- Canada: IECS-003
- EU: CE Mark

■ WARRANTY

- 1 year parts and labour

FEATURES

■ NETWORK PROBE

- 10/100 Ethernet port
- 2.4GHZ 802.15.4 radio
 - Dual radios 2.4GHz and 900MHz by special order
- External antenna (RP-SMA male)
- Power: 6VDC barrel jack or Power over Ethernet (PoE)
- Web and Telnet servers for Configuration and Management
- Energy and Beacon scans via Web interface
- Easy network installation via Gecko management tool

■ PROTOCOL ANALYZER

- Industry standard Wireshark® protocol analyzer
- Multi-platform: Windows, Linux, OS X, and more
- Live capture and offline analysis
- Flexible filtering and coloring rules for quick, intuitive analysis

■ PAN PROTOCOL DISSECTORS

- 802.15.4
- ZigBee 2007
- ZigBee PRO
- ZigBee SCoP (ZIPT)
- 6LoWPAN
- ZigBee Cluster Library



401 - 2071 kingsway avenue
port coquitlam | bc | canada | v3c 6n2

toll free +1.800.665.7798
t +1.604.468.2552 | f +1.604.468.2445
info@exegin.com | www.exegin.com